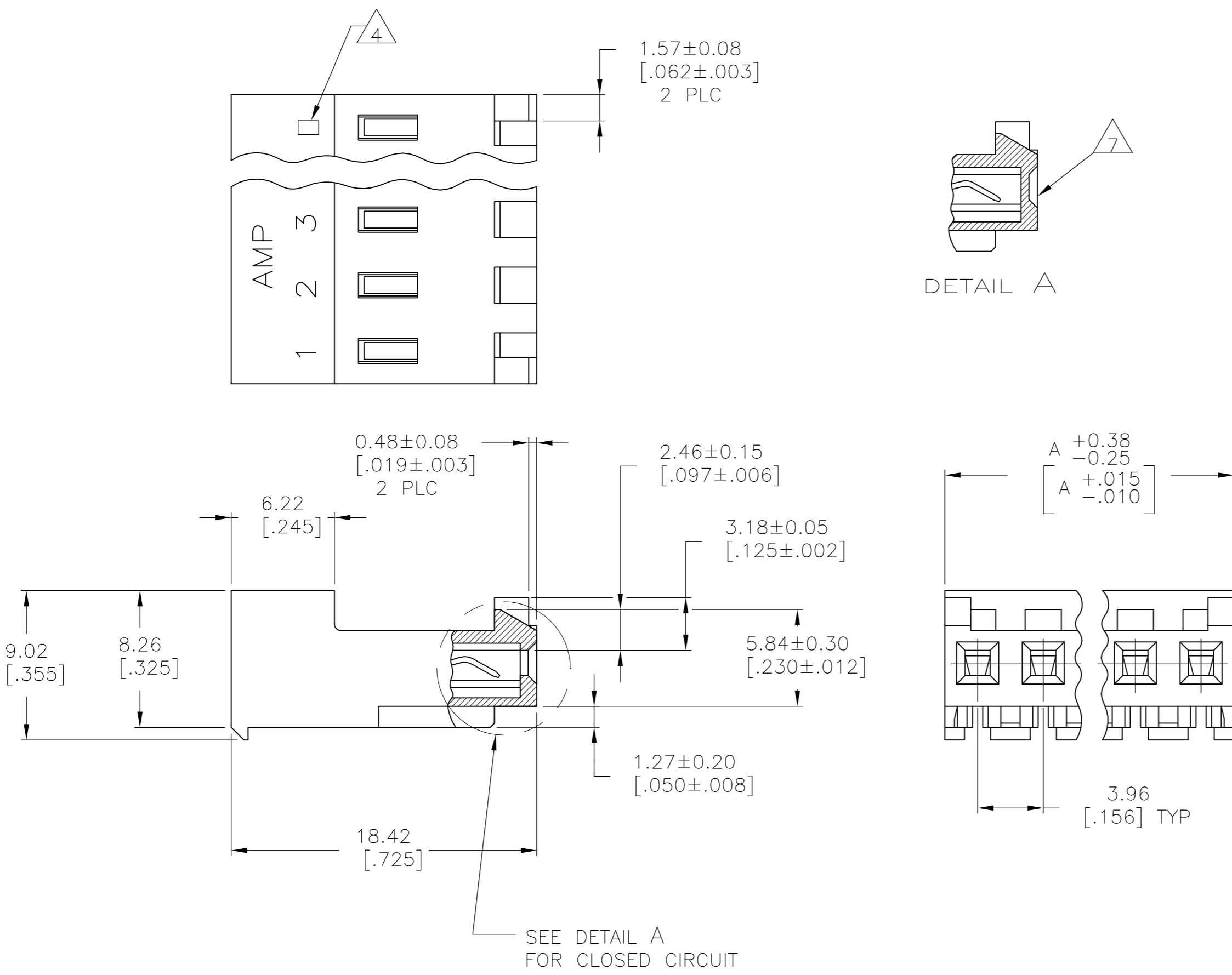


THIS DRAWING IS UNPUBLISHED. RELEASED FOR PUBLICATION
 © COPYRIGHT BY TYCO ELECTRONICS CORPORATION. ALL RIGHTS RESERVED.

LOC	DIST	REVISIONS			
P	LTR	DESCRIPTION	DATE	DWN	APVD
CM	00	N	ECO-07-012896	26JUN07	KW DB



- 1 MATERIAL: CONNECTOR - NYLON UL94V-2 (RED).
 CONTACTS - 0.30[.012] THICK COPPER ALLOY BRIGHT TIN-LEAD
 0.00203[.000080] MIN THICK FOR -2 THRU -28
 - 0.30[.012] THICK COPPER ALLOY MATTE WHISKER
 MITIGATED TIN 0.00203[.000080] MIN THICKNESS
 OVER NICKEL UNDERPLATE FOR -32 THRU -58.
- 2. CONTACTS ACCEPT 22 AWG WIRE WITH 2.41[.095] MAX INSULATION DIAMETER.
- 3. CONTACTS MUST ACCEPT 1.14±0.03[.045±.001] POST AND REMAIN LOCKED IN POSITION.
- 4 IDENTIFICATION NUMBER FOR LAST CIRCUIT MAY NOT APPEAR ON ALL ASSEMBLIES.
- 5. DIMENSIONS IN BRACKETS ARE IN INCHES.
- 6. HOUSING FEATURES ARE: CLOSED END WITH LOCKING RAMP AND POLARIZING TAB.
- 7 DETAIL "A" SHOWS A CIRCUIT MOLDED CLOSED.

FINISH	DIM A	NO. OF CIRCUITS	PART NO.
TIN	27.74 [1.092]	7	3-643277-7
TIN	23.77 [.936]	6	3-643277-6
TIN-LEAD	23.77 [.936]	6	643277-6

THIS DRAWING IS A CONTROLLED DOCUMENT.

DWN B. LEWIS 12FEB91	Tyco Electronics Corporation Harrisburg, PA 17105-3608				
CHK R. SWING 12FEB91					
APVD D. CLARK 12FEB91					
PRODUCT SPEC 108-1051 APPLICATION SPEC 114-1020					
MATERIAL 1	FINISH 1	NAME MTA-156 CONNECTOR ASSEMBLY, 22 AWG, NO.5 CIRCUIT CLOSED.			
CUSTOMER DRAWING		SIZE A2	CAGE CODE 00779	DRAWING NO C-643277	RESTRICTED TO -
		SCALE 4:1	SHEET 1 OF 1	REV N	

